

# RCI-52-22-011-4: Glass Repair, EDV

## Rivian Automotive, LLC General Repair Guideline

<b>Document Type</b>	Collision Repair Information Document
<b>Date</b>	June 12, 2026
<b>Affected Region(s)</b>	North America
<b>Affected Model(s)</b>	EDV
<b>Model Year(s)</b>	2022+
<b>Vehicle System</b>	52 - Body

Rivian has established important guidelines regarding collision repair and interaction with parts on Rivian vehicles to help ensure the vehicle is repaired to Rivian standards. Certified Collision Centers and the collision industry must follow these guidelines to uphold Rivian's standards of safety and quality.

Repair guidelines, position statements, and repair procedures published by Rivian are engineered and tested to help ensure Rivian vehicles are repaired to provide quality, performance, safety, and durability. To meet [RCI-98-22-003-2: Rivian Repair Standards](#), repairs should be performed by Rivian Certified Technicians using Rivian approved repair procedures, tools, and Rivian Original Equipment Parts.

Rivian original equipment windshields and glass ensure proper fitment, visual clarity, acoustic dampening, UV protection, and integrate with Driver+, Rivian's suite of Advanced Driver Assistance Systems (ADAS).

If glass repair is not possible, Rivian strongly recommends that only new, Rivian original equipment parts should be used for replacement. The use of new, Rivian original equipment parts makes sure that the vehicle is restored to Rivian Standards.

### Glass Repair Guideline

Rivian recommends that only Rivian-approved glass repair tools be used to perform glass repairs to meet Rivian Repair and Safety Standards. Depending on the manufacturer of the approved repair tool, repair procedures will vary. Refer to the Rivian Service Tool Catalog for access to the current approved tools relevant to this procedure.

### Damage Investigation

Tiny holes, scratches, chips, or cracks can degrade the window structure and may affect the vehicle's structural rigidity when under high stress conditions like a collision. Cracks and chips can grow or expand during moderate-to-extreme temperature variances. In addition, glass damage can also become a distraction and impede the driver's vision, risking occupant safety. For these reasons, glass repair or replacement should be completed as soon as possible.

Refer to the following questions for assistance on determining if glass repair is necessary:

- Is a high-quality repair possible based on the type of damage and location?
- Is the repair cost effective (multiple chips/sand blast) or time consuming in relation to a replacement?
- Would the requirements for a quality repair (clarity, strength, finish) be met after the repair is completed?
- Is the chip repair visually acceptable to the customer?

### Glass Repair Pre-Requisites

When inspecting vehicle glass, the overall existing condition should be taken into consideration. Rivian does not recommend repairing glass that has excessive surface chips and scratches. Excessive surface chips and scratches will cause light to be refracted which may negatively affect the driver's perception of the vehicle's surroundings, compromising safe operation of the vehicle.

Windshield repairs can only be performed if the damage is located outside the driver's field of view on the outer most glass panel. See below for measurements on how to find the No-Repair Zone.

#### **Important:**

Glass with damage in the immediate area of sensors or cameras should be immediately replaced. Failure to adhere to this requirement may adversely affect the performance of the Driver+ which can potentially compromise safe operation of the vehicle.

Windshield or glass replacement is **required** if any of the following conditions are met:

- Damage is in the driver's field of view.
- Damage is present on the inner layer of the laminated glass.
- Cracks on the glass extend to the edge.
- Damage is in view of the Driver+ cameras, radars, or near the Sensor, Rain/Light attached to the windshield.

#### **Note:**

The Sensor, Rain/Light must be replaced any time it is removed. Refer to the appropriate Service Manual procedure for further instructions.

- The outer edge of the glass showing signs of delamination (bubbling).
- The existing condition of the glass is compromised due to excessive surface damage.

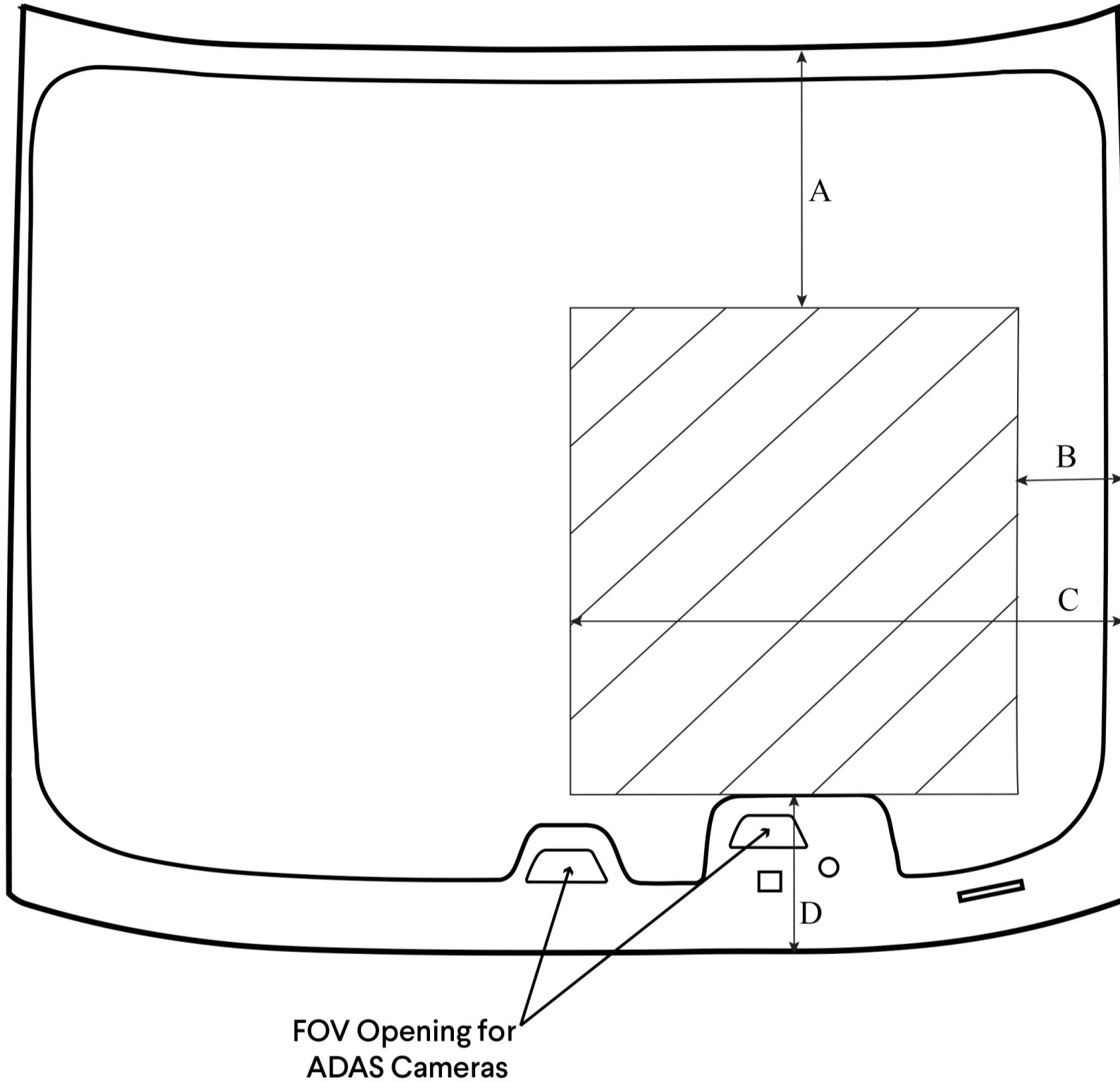
**Note:**

Glass repair on vehicles with heated windshields follow the same repair guidelines as conventional windshields.

**Post Glass Repair**

Rivian approves repaired glass that is clear, permeable to light, and has no distortion present after the repair. The repair zone must not be visible from inside of the vehicle to not act as a distraction to the driver.

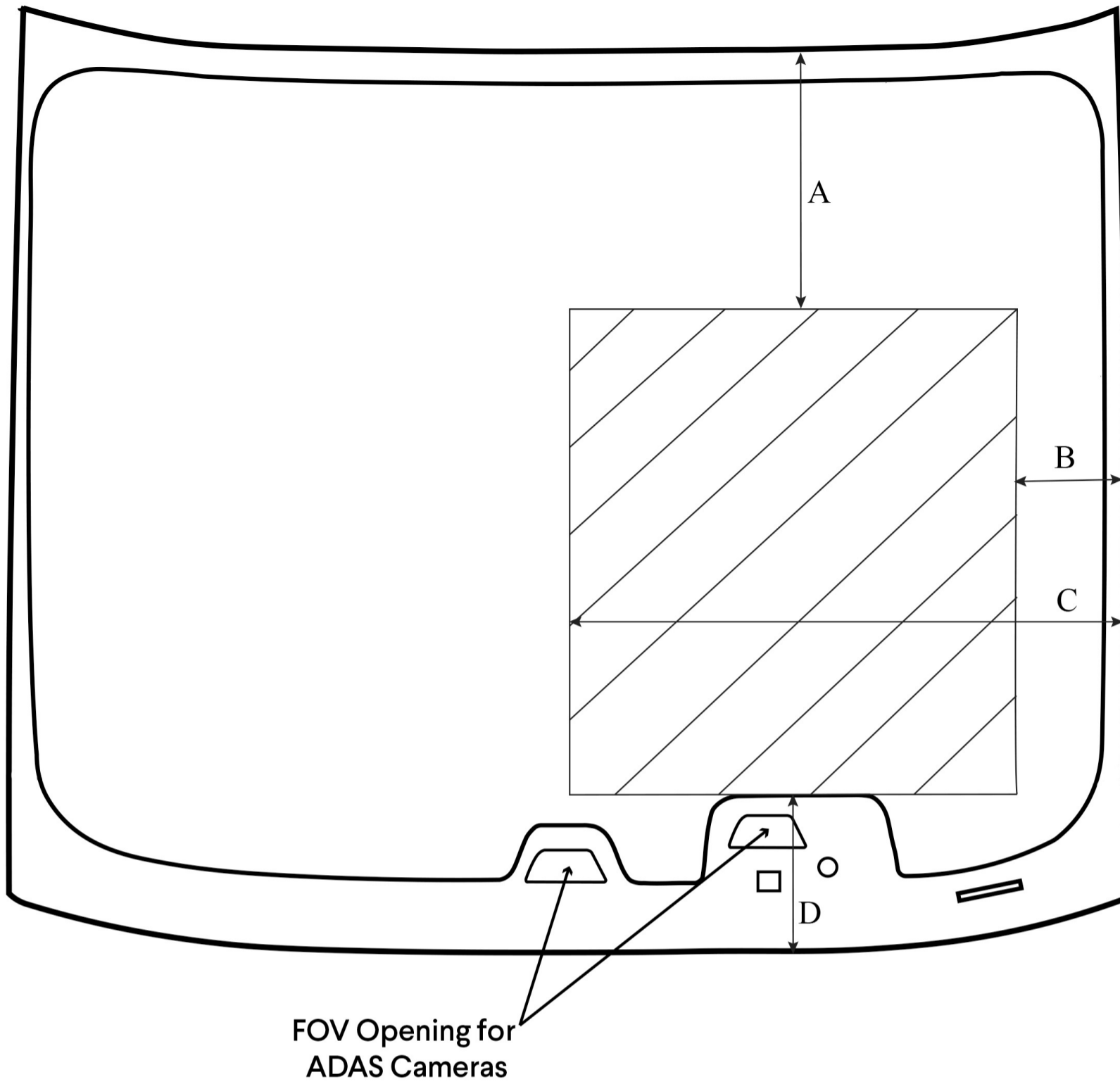
**EDV 500 Driver Field of View (DFV)**



**EDV 500 Driver Field of View (DFV) Measurements**

Description	Measurement (mm)
A	445
B	204
C	792
D	~227

EDV 700 Driver Field of View (DFV)



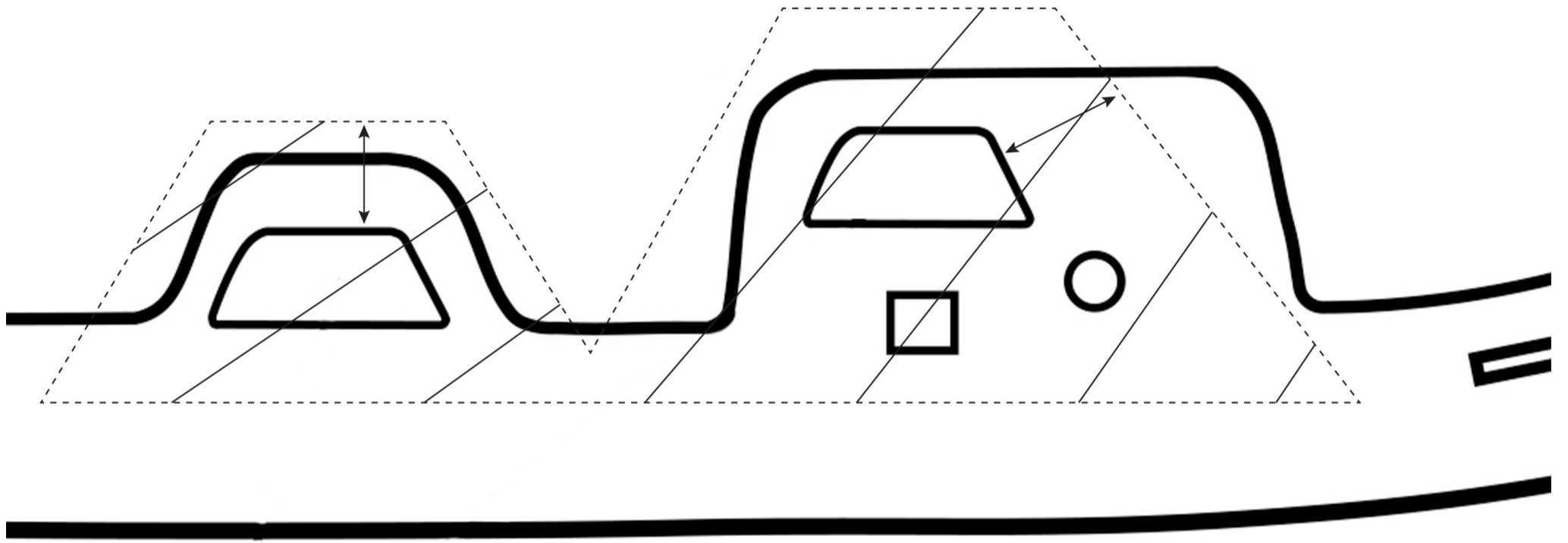
EDV 700 Driver Field of View (DFV) Measurements

Description	Measurement (mm)
A	445
B	180
C	763
D	~227

**Important:**

The front camera no-repair zone is within a 25mm area around and including the field of view (FOV) opening for the ADAS camera.

EDV ADAS Camera FOV



Always refer to the appropriate Rivian Repair procedure for the most up to date information regarding specifications as well as location, position, operation sensitivity, part numbers and any revisions listed.

[Download a PDF copy of this document](#)