

NUMBER: 31-001-13

GROUP: Collision Bulletin

DATE: January 11, 2013

This bulletin is supplied as technical information only and is not an authorization for repair. No part of this publication may be reproduced, stored in a retrieval system, or transmitted, in any form or by any means, electronic, mechanical, photocopying, or otherwise, without written permission of Chrysler Group LLC.

SUBJECT:

Overspray Removal

OVERVIEW:

This bulletin involves removing overspray which can be a result of industrial fallout and/or a poor refinishing process.

DISCUSSION:

Depending on the severity and extent of overspray on painted surfaces the removal process will vary. Always begin using the least aggressive method. An example of overspray is shown in (Fig. 1).

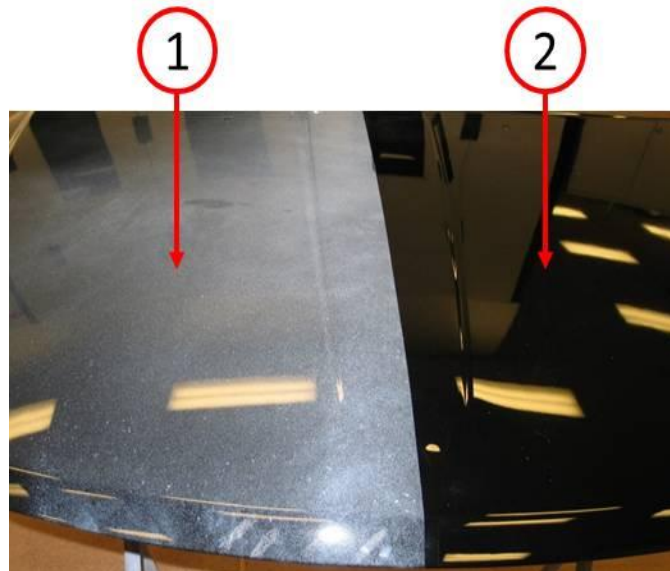


Fig. 1 Overspray

1 - Overspray

2 - Uncontaminated Area

-
1. Before removing any overspray, wash the effected area with soap and water as shown in (Fig. 2).

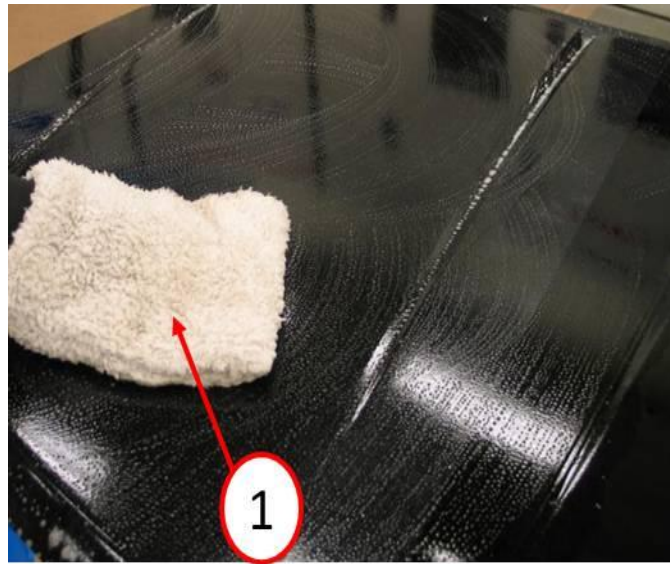


Fig. 2 Washing With Soap and Water

1 - Microfiber Wash Mitt

2. Work in a 12"(305mm) x12"(305mm) area at a time and apply Meguiars Final Inspection or a detail spray equivalent to the effected area (Fig. 3).



Fig. 3 Detail Spray

1 - Detail Spray Over Overspray
2 - Meguiars Final Inspection Detail Spray

- Using a clay bar work in a unidirectional pattern while the detail spray applied in [Step #2](#) is still wet as shown in ([Fig. 4](#)).

NOTE: Do not move the clay bar in a circular direction on the panel surface as it will create scratches .

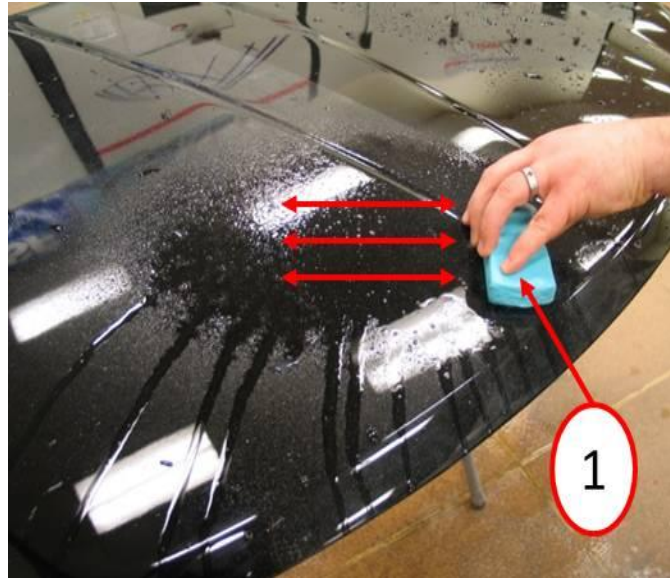


Fig. 4 Clay Bar

1 - Mild Clay Bar

-
- As the overspray is removed, remove the detail spray residue with a microfiber cloth and continue to the next effected area until all the overspray is removed ([Fig. 5](#)).



Fig. 5 Microfiber Cloth

1 - Microfiber Cloth

-
5. If overspray cannot be removed with a clay bar and Meguiars Final Inspection or equivalent, proceed to [Step #6](#).
 6. Use a D.A. polisher with a foam finishing pad and Meguairs So1o Cut & Polish Cream Or an equivalent compound and polish cream, working in a 12”(305mm) x12”(305mm) area. Was the overspray removed?
 - a. Yes >>> Continue using this method on the other affected painted surfaces and remove polishing residue with a microfiber cloth as shown in ([Fig. 5](#)).
 - b. No >>> Proceed to [Step #7](#).
 7. Use a rotary buffer with a foam polishing pad set to a preferred RPM and Meguairs So1o Cut & Polish Cream Or an equivalent compound and polish cream, working in a 12”(305mm) x12”(305mm) area. Was the overspray removed?
 - a. Yes >>> Continue using this method on the other affected painted surfaces and remove polishing residue with a microfiber cloth as shown in ([Fig. 5](#)).
 - b. No >>> Proceed to [Step #8](#).

NOTE: A rotary buffer must be used by a trained technician as it can permanently damage the painted surface if not used correctly. Damaged areas can only be repaired by refinishing the affected vehicle panel. Prior to using a rotary buffer measure the paint thickness using Gauge #PR-ETG-2X or equivalent to determine clearcoat or single-stage paint thickness before and after the repair.

CAUTION: Do not remove more than 0.2 mils of clearcoat when polishing. Most vehicles have 1.5 mils of clearcoat film thickness.

- 8. Lightly wetsand the overspray with Meguiars unigrit 2500 wet sandpaper (or equivalent) with a Meguiars sanding pad (or equivalent) in a unidirectional pattern until the overspray has been removed or more than 0.2 mils of clearcoat has been removed (Fig. 6).

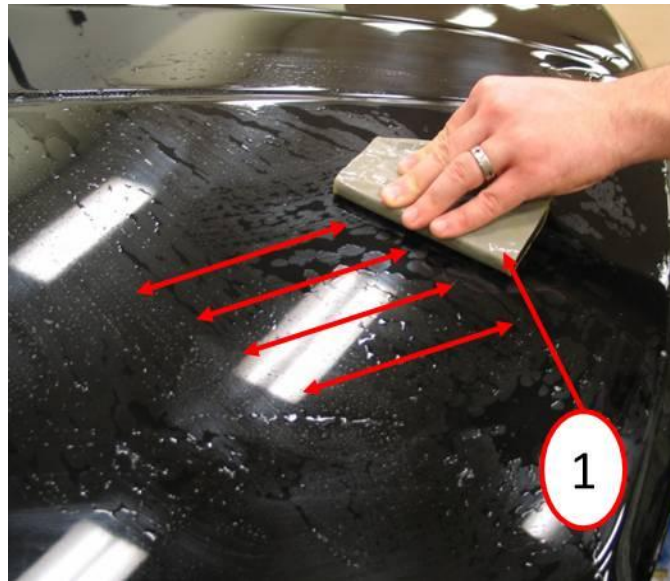


Fig. 6 Wet Sanding

1 - Wet sandpaper wrapped around a sanding block.

- 9. Use a rotary buffer with a cutting polishing pad set to a preferred RPM and Meguairs So1o Cut & Polish Cream Or an equivalent compound and polish cream, working in a 12”(305mm) x12”(305mm) area.
- 10. Remove the compound residue with a microfiber cloth to verify the scratches have been removed. Were the sand scratches removed (Fig. 5)?
 - a. Yes >>> Proceed to [Step #11](#).
 - b. No >>> Repeat [Step #9](#).

CAUTION: Do not remove more than 0.5 mils of clearcoat when wet sanding an polishing. Most vehicles have 1.5 mils of clearcoat film thickness.

- 11. Use a rotary buffer with a foam polishing pad set to a preferred RPM and Meguairs So1o Cut & Polish Cream Or an equivalent compound and polish cream, working in a 12”(305mm) x12”(305mm) area. Was the overspray removed?
 - a. Yes >>> Continue using this method with [Step #10](#) on the other affected painted surfaces and remove polishing residue with a microfiber cloth as shown in (Fig. 5).
 - b. No >>> Suspect area refinish will be required to remove overspray.

PARTS REQUIRED:

Qty.	Part No.	Description
1 (AR)	NPN	Meguiars Mild Detailing Clay C2000 (Or Equivalent)
1 (AR)	NPN	Meguiars Final Inspection 34 Meguiars

Qty.	Part No.	Description
		M2401 (Or Equivalent)
1 (AR)	NPN	Meguiars So1o Cut & Polish Cream M8632 (Or Equivalent)
1 (AR)	NPN	Meguiars Ultimate Wipe Detailing Cloth M9910 (Or Equivalent)
1 (AR)	NPN	Meguiars unigrit 2500 Wet Sandpaper S2525 (Or Equivalent)

SPECIAL TOOLS/EQUIPMENT REQUIRED:

PR-ETG-2X	Paint Thickness Gauge
NPN	Rotary Buffer
NPN	D.A. Polisher

POLICY:

Information Only.